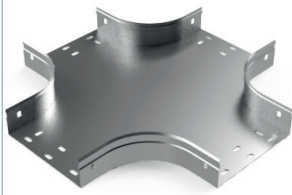


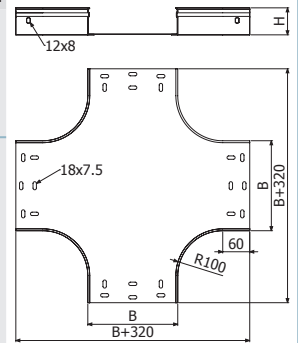


BASORTRAY

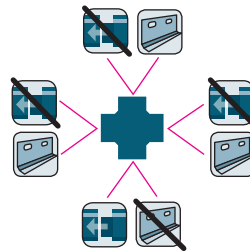
CRERC



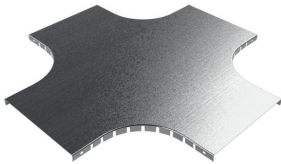
	B		H		GS		GC		i304		i316	
	mm	inch	mm	inch	REF.	kg/ud	REF.	kg/ud	REF.	kg/ud	REF.	kg/ud
CRERC 100x35	100	4"	35	1 3/8"	2/1866	1,02	2/1897	1,16				
CRERC 150x35	150	6"	35	1 3/8"	2/1867	1,37	2/1898	1,56				
CRERC 200x35	200	8"	35	1 3/8"	2/1868	1,76	2/1899	2,00				
CRERC 300x35	300	12"	35	1 3/8"	2/1869	2,65	2/1900	3,02				
CRERC 100x60	100	4"	60	2 3/8"	2/1873	1,19	2/1904	1,35				
CRERC 150x60	150	6"	60	2 3/8"	2/1874	1,54	2/1905	1,75				
CRERC 200x60	200	8"	60	2 3/8"	2/1875	1,92	2/1906	2,19				
CRERC 300x60	300	12"	60	2 3/8"	2/1877	2,82	2/1908	3,21				
CRERC 400x60	400	16"	60	2 3/8"	2/1878	3,87	2/1909	4,41				
CRERC 500x60	500	20"	60	2 3/8"	2/1879	5,08	2/1910	5,79				
CRERC 600x60	600	24"	60	2 3/8"	2/1872	6,28	2/1911	7,35				
CRERC 100x80	100	4"	80	3 1/7"	2/1881	1,31	2/1912	1,50	2/17895	1,31	2/18217	1,31
CRERC 150x80	150	6"	80	3 1/7"	2/1882	1,66	2/1913	1,89	2/17896	1,66	2/18218	1,66
CRERC 200x80	200	8"	80	3 1/7"	2/1883	2,05	2/1914	2,34	2/17897	2,05	2/18219	2,05
CRERC 300x80	300	12"	80	3 1/7"	2/1885	2,94	2/1916	3,36	2/17898	2,94	2/18220	2,94
CRERC 400x80	400	16"	80	3 1/7"	2/1886	4,00	2/1917	4,56	2/17899	4,00	2/18221	4,00
CRERC 500x80	500	20"	80	3 1/7"	2/1887	5,21	2/1918	5,93	2/17900	5,21	2/18222	5,21
CRERC 600x80	600	24"	80	3 1/7"	2/1880	6,45	2/1919	7,49	2/17901	6,45	2/18223	6,45
CRERC 100x100	100	4"	100	4"	2/1889	1,45	2/1920	1,65				
CRERC 150x100	150	6"	100	4"	2/1890	1,80	2/1921	2,05				
CRERC 200x100	200	8"	100	4"	2/1891	2,19	2/1922	2,49				
CRERC 300x100	300	12"	100	4"	2/1893	3,08	2/1924	3,51				
CRERC 400x100	400	16"	100	4"	2/1894	4,14	2/1925	4,71				
CRERC 500x100	500	20"	100	4"	2/1895	5,34	2/1926	6,09				
CRERC 600x100	600	24"	100	4"	2/1896	6,71	2/1927	7,65				



2 x JUER



TCRERC



	B		GS		GC		i304		i316	
	mm	inch	REF.	kg/ud	REF.	kg/ud	REF.	kg/m	REF.	kg/ud
TCRERC 100	100	4"	2/1959	0,60	2/1967	0,70	2/17902	0,60	2/18224	0,60
TCRERC 150	150	6"	2/1960	0,84	2/1968	0,99	2/17903	0,84	2/18225	0,84
TCRERC 200	200	8"	2/1961	1,11	2/1969	1,30	2/17904	1,12	2/18226	1,12
TCRERC 300	300	12"	2/1963	1,74	2/1971	2,04	2/17905	1,74	2/18227	1,74
TCRERC 400	400	16"	2/1964	2,48	2/1972	2,90	2/17906	2,48	2/18228	2,48
TCRERC 500	500	20"	2/1965	3,32	2/1973	3,89	2/17907	3,33	2/18229	3,33
TCRERC 600	600	24"	2/1966	4,28	2/1974	5,01	2/17908	4,28	2/18230	4,28

